

Setting Up CCS Crystal Viewer

last updated for the Autumn 2014 (3.55) release

Technical Guide



CAPITA

Revision History

Version	Published on
Autumn 2014 (3.55) - 1.0	27/11/2014

Doc Ref

Setting Up CCS Crystal Viewer Technical Guide/Autumn 2014 (3.55)/2014-11-27

© Capita Business Services Ltd 2014. All rights reserved.

No part of this publication may be reproduced, photocopied, stored on a retrieval system, translated or transmitted without the express written consent of the publisher. Microsoft® and Windows® are either registered trademarks or trademarks of Microsoft Corporation in the United States and/or other countries.

www.capita-one.co.uk

Contacting the Service Desk

You can log a call with the Service Desk via the Web Support tool available on [SupportNet](#).

Providing Feedback on Documentation

We always welcome comments and feedback on the quality of our documentation including online help files and handbooks. If you have any comments, feedback or suggestions regarding the module help file, this handbook (PDF file) or any other aspect of our documentation, please email:

onepublications@capita.co.uk

Please ensure that you include the document name, version and aspect of documentation on which you are commenting.

Contents

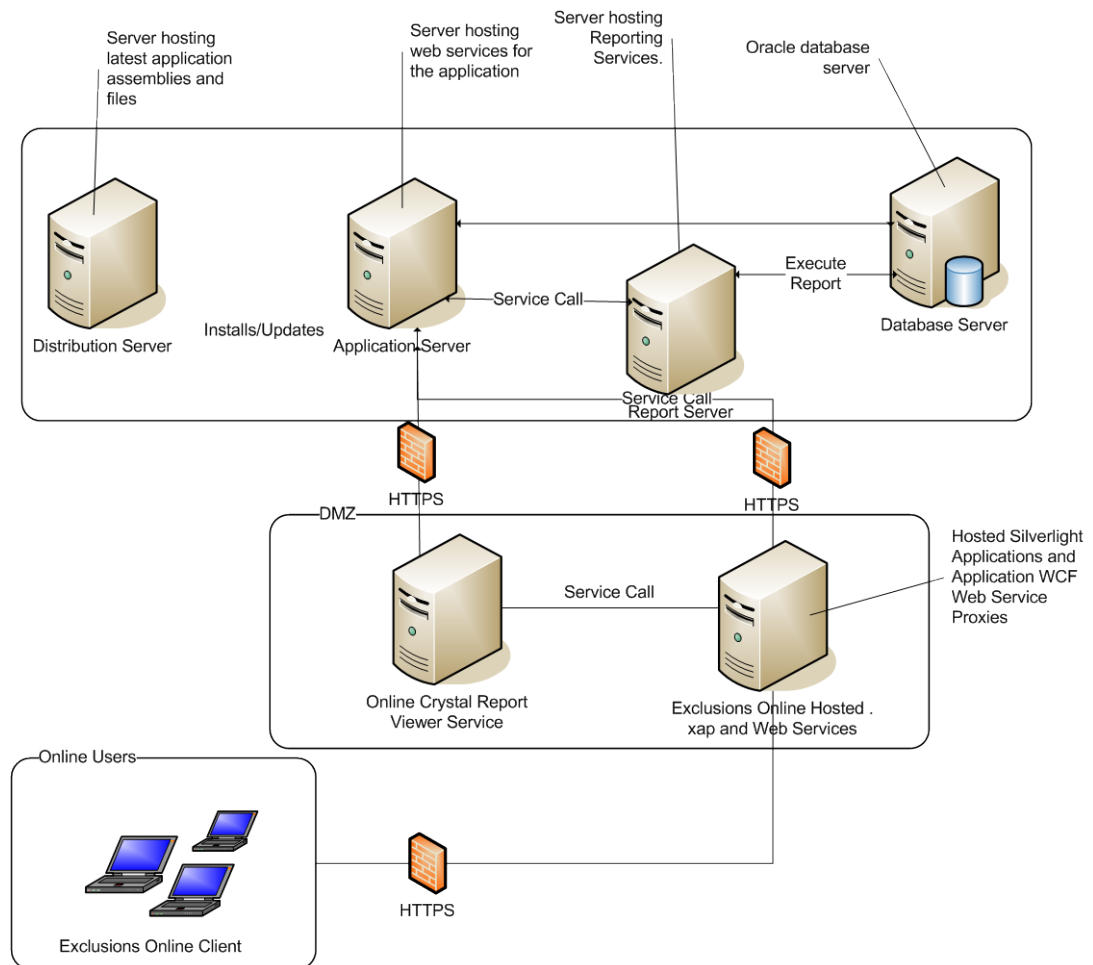
01/ Introduction	1
Introduction	1
Server Prerequisites	1
02/ Installing SAP Crystal Reports Runtime	2
03/ Installing Online Crystal Reports Viewers	4
04/ Configuring the Crystal Reports Environment	6
Configuring the CSS Online Portal to use the Online Crystal Reports Viewer	6
Configuring the Online Crystal Reports Viewer	6
Setting IIS Permissions the Online Crystal Reports Viewer	7
Index	8

01 / Introduction

Introduction

This Setup and Configuration Document Refers to A typical configuration of Capita's One v4 as shown below.

There are many way to successfully configure the Capita One.Net Architecture, if your architecture is configured differently to the diagram below this document may be a useful guide, alternatively please contact One Technical Services if you have any concerns.



Server Prerequisites

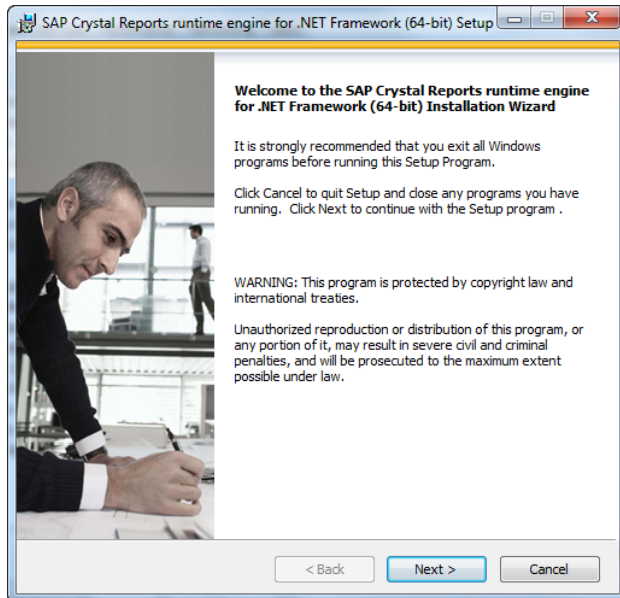
Microsoft .Net Framework 4.5

The Online Crystal Reports Viewer requires that a minimum of .Net Framework 4.5 is installed prior to installation.

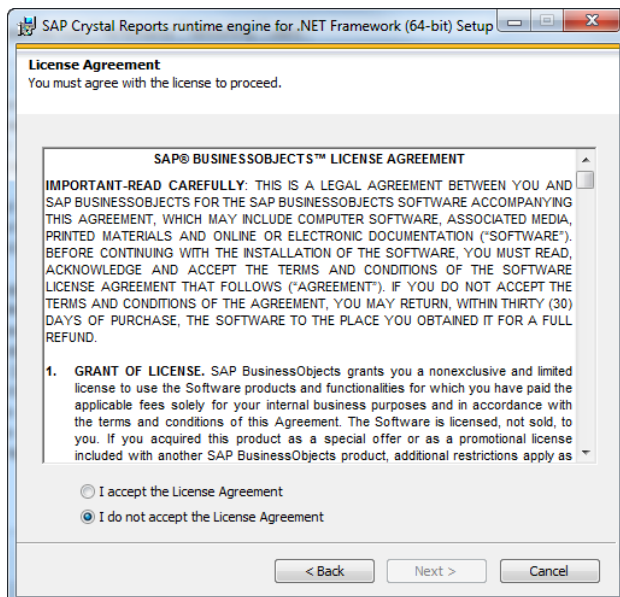
02 / Installing SAP Crystal Reports Runtime

The SAP Crystal Reports runtime is installed automatically when the v4 Client is installed. However, the runtime must be installed manually on the Web Crystal Reports server

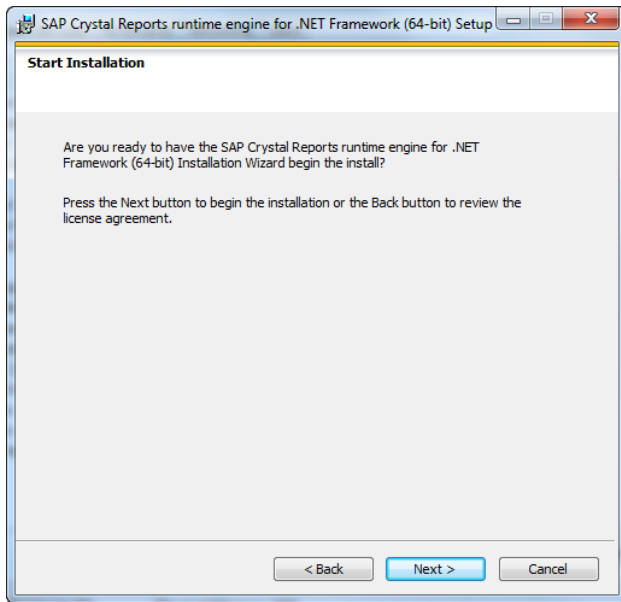
1. From the root of One installation media, open the CrystalReports folder.
2. Double-click the CRRuntime_64bit_13_0_5.msi to display the first page of the installation wizard.



3. Click the **Next** button.



4. Select the **I accept the License Agreement** radio button and click the **Next** button.



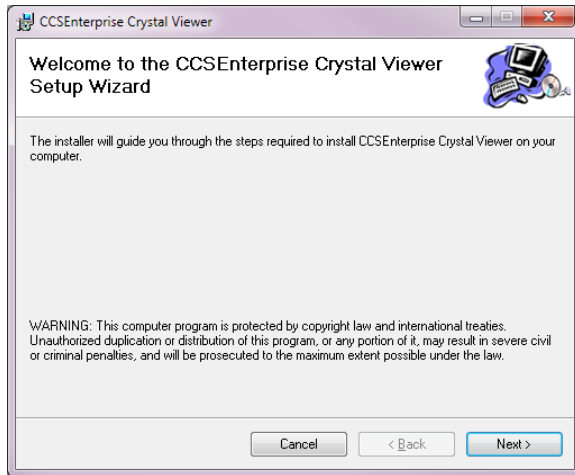
5. Click the **Next** button to begin the installation.



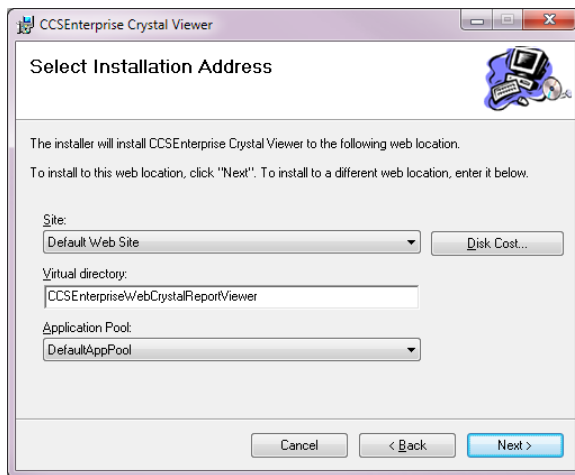
6. When the installation is complete, click the **Finish** button.

03 / Installing Online Crystal Reports Viewers

1. Locate the WebCrystalReportViewer.Setup.msi on the DVD and double-click it to launch the CCSEnterprise Crystal Viewer installation wizard.



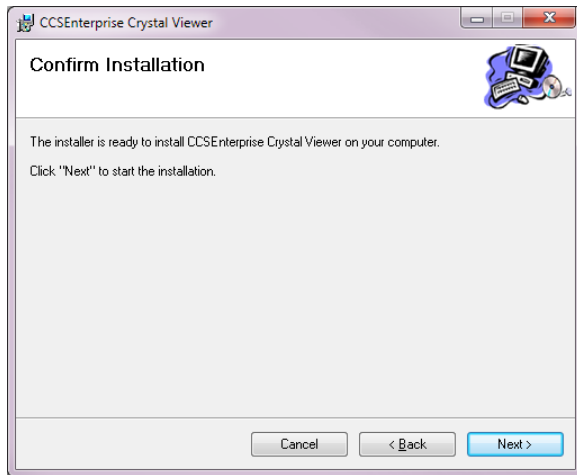
2. Click the **Next** button.



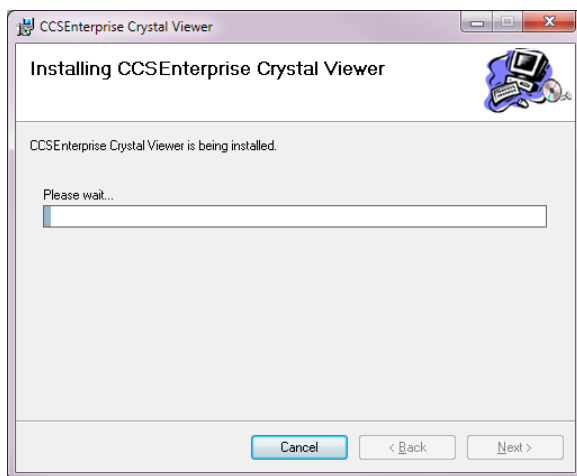
3. Choose the **Site**, **Virtual Directory** and **Application Pool** if different from the default settings.

IMPORTANT NOTE: The Crystal Reports Viewer must be installed on a 64-Bit application pool.

4. Click the **Next** button to display the **Confirm Installation** page.



5. Click the **Next** button to start the installation process.



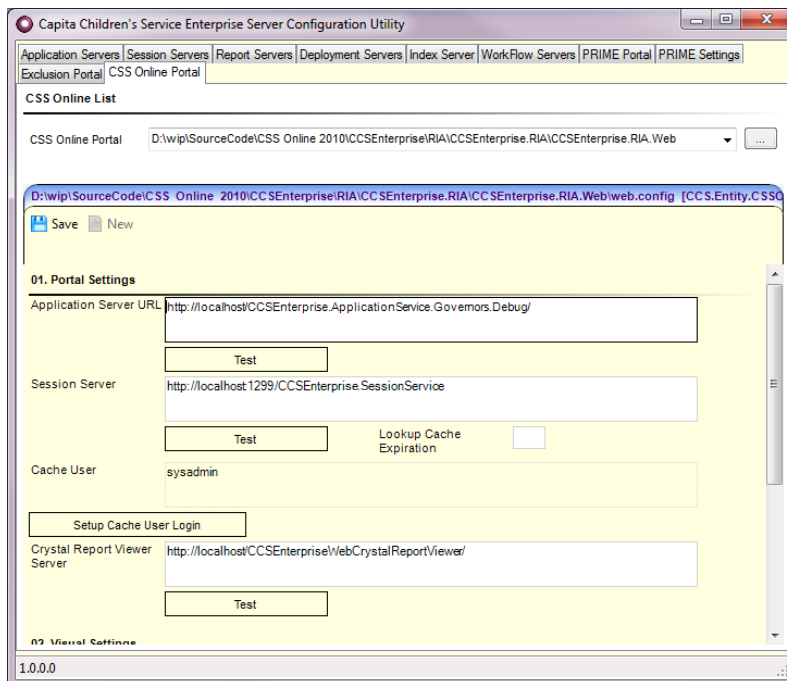
6. After the installation has finished, click the **Close** button.

You will then need to configure the Online Crystal Reports Viewer with the correct Application Server settings.

04 / Configuring the Crystal Reports Environment

Configuring the CSS Online Portal to use the Online Crystal Reports Viewer

1. Locate the Installation directory for CSS Online Portal, by default located at C:\inetpub\wwwroot\CCSEnterpriseOnline\Config.
2. Double-click the CCSServerConfig.exe to display the **Capita Children's Services Enterprise Server Configuraition Utility**.



3. Select the **CSS Online Portal** tab.
4. Locate the **Crystal Report Viewer Server** panel. This should be set to the server installed in the previous step. You should ensure that the url ends with a '/' symbol and points at the server not the default.aspx page held on the server.

Configuring the Online Crystal Reports Viewer

The administrator needs to set an item in the web.config file on the Online Crystal Reports Viewer. This is held in the 'app settings' section of web.config:

ApplicationServer: This setting should be set to the URL of the main v4 application server behind the firewall.

Example:

```
<appSettings>  
<add key="ApplicationServer"  
value="http://appServer/CCSEnterprise_ApplicationService"/>  
</appSettings>
```

Setting IIS Permissions the Online Crystal Reports Viewer

The Crystal reports viewer needs to be able to write to the 'ReportStore' folder. Therefore, the IIS_IUSRS user has to be given 'Write' permission on the folder.

Index

architecture diagram	1
Crystal Reports Runtime, installing	2
Crystal Reports Viewer	
configuring	6
installing	4
linking to CSS Online Portal	6
setting IIS permissions	7
CSS Online Portal, configuring	6
installing	
online Crystal Reports Viewer	4
SAP Crystal Reports Runtime	2
introduction	1
server prerequisites	1