



The Importance of Data

31st Jan 2023



Data Protection Digital Information Bill & Data Economy Act

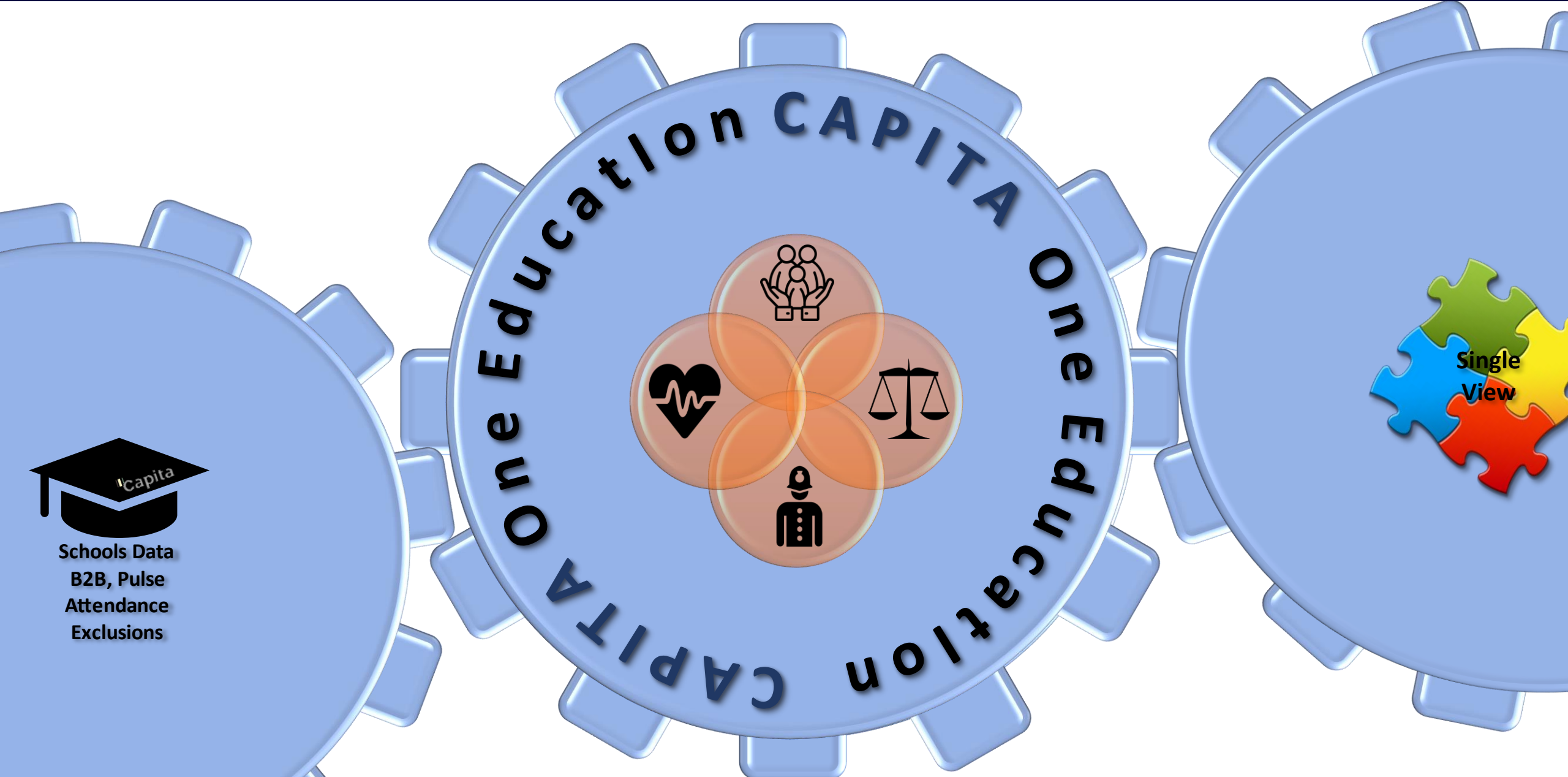
- (9) The first condition is that the objective has as its purpose—
 - (a) the improvement or targeting of a public service provided to individuals or households, or
 - (b) the facilitation of the provision of a benefit (whether or not financial) to individuals or households.
- (10) The second condition is that the objective has as its purpose the improvement of the well-being of individuals or households.
- (11) The reference in subsection (10) to the well-being of individuals or households includes—
 - (a) their physical and mental health and emotional well-being,
 - (b) the contribution made by them to society, and
 - (c) their social and economic well-being.

My interpretation: A LA is empowered and enabled to share data to target those in need of intervention, and to promote services and benefits for the betterment of your citizens.

You, as One Education custodians, have the most comprehensive set of child records in your LA.

How will you use this data? Early intervention, promote FSMs, locate HAF, locate food banks, prevention and deferral from ASB, identification of those at risk of grooming

Setting The Scene - The Education Data Perspective




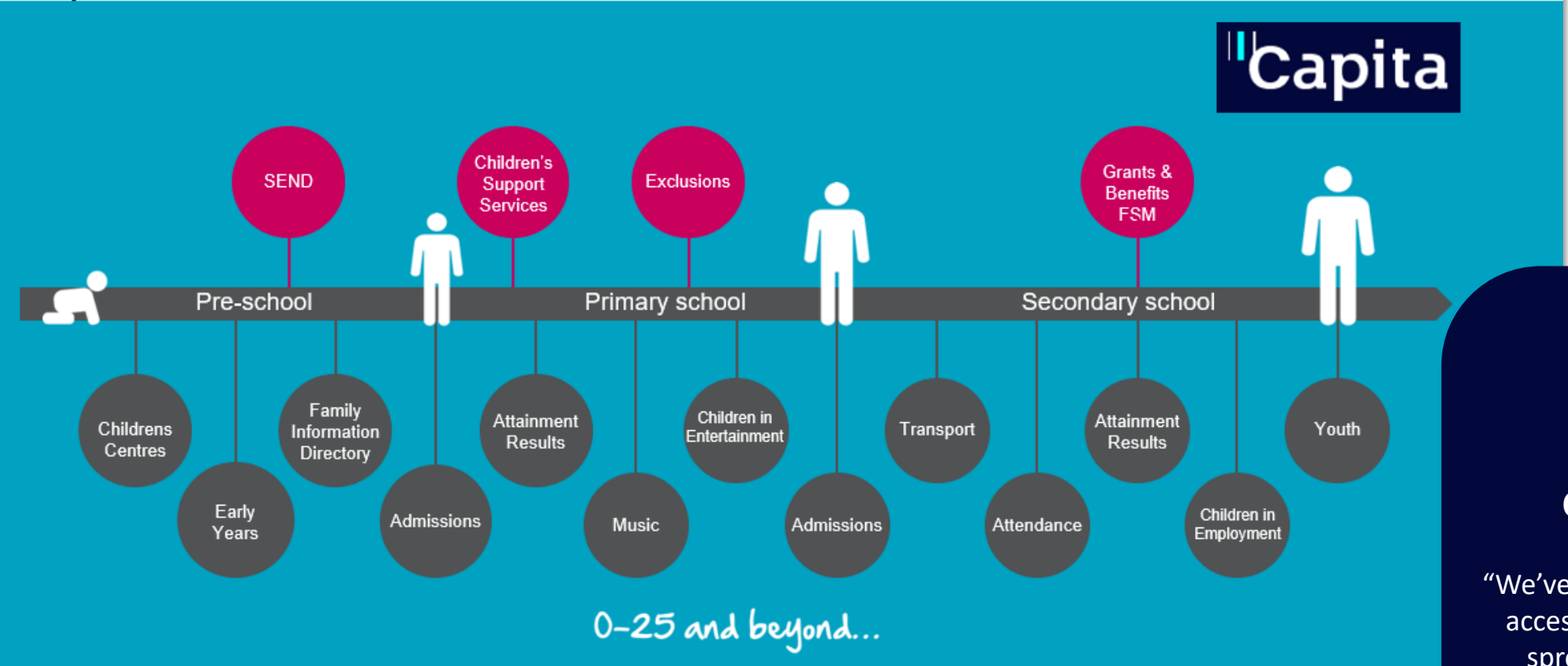
Schools Data
B2B, Pulse
Attendance
Exclusions

Single
View

Solution | Overview



 **one** System, to support your children, families and citizens journeys, from birth to adulthood



Capita One Education

“We’ve been able to decrease our need to access individual data sources, such as spreadsheets and other databases, by over 50% in one year.”

Emma Toublic – Head of Education Information and Business Systems at Essex County Council

Setting The Scene – Escalating Need Referrals

3rd Party



Capita

Escalating Need Referral

YJ	• ASB / offending (Capita One YJ)
IYSS	• NEET (Careworks)
Caseload	• High need intervention (One CSS & OLM)
SEND	• (Capita One)
Exclusions	• Frequency and period (Capita One)
Grants & Benefits	• Free School Meals (Capita One)
Attainment	• Maths, English, < Level 2 (5 GCSEs) – (Capita One Pulse)
Transport	
Attendance	• <N% (Capita One B2B/Attendance)
Admissions	• Registered school, change frequency, location (Capita One)
Early Years	• Development & progress (Capita One)
Contact & Demographics	• BAME, LAC address changes and SOA (Capita One Pulse)

Universal Provision

What Next?

Ask yourself:

- How good is the quality of my data?
- Am I ready to consume data through the new B2B process?
- How do I get my service users invested in quality data and:?
 - Make their lives easier
 - Declutter
 - Streamline
 - Digitisation
 - Reporting
 - How does their data fit into the bigger picture?

Find out:

- Who is responsible for the LA's Data Strategy?
- Who is responsible for early intervention?
- Who is responsible for Supporting Families / Families First?
- Who is responsible for Levelling Up?
- Who is responsible for Holiday Activity Funds?
- Who is responsible for food banks?
- How do you fit into these initiatives?